



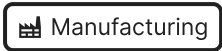
**MOTIUS**  
WE R&D.

# Predictive Spare Parts Service

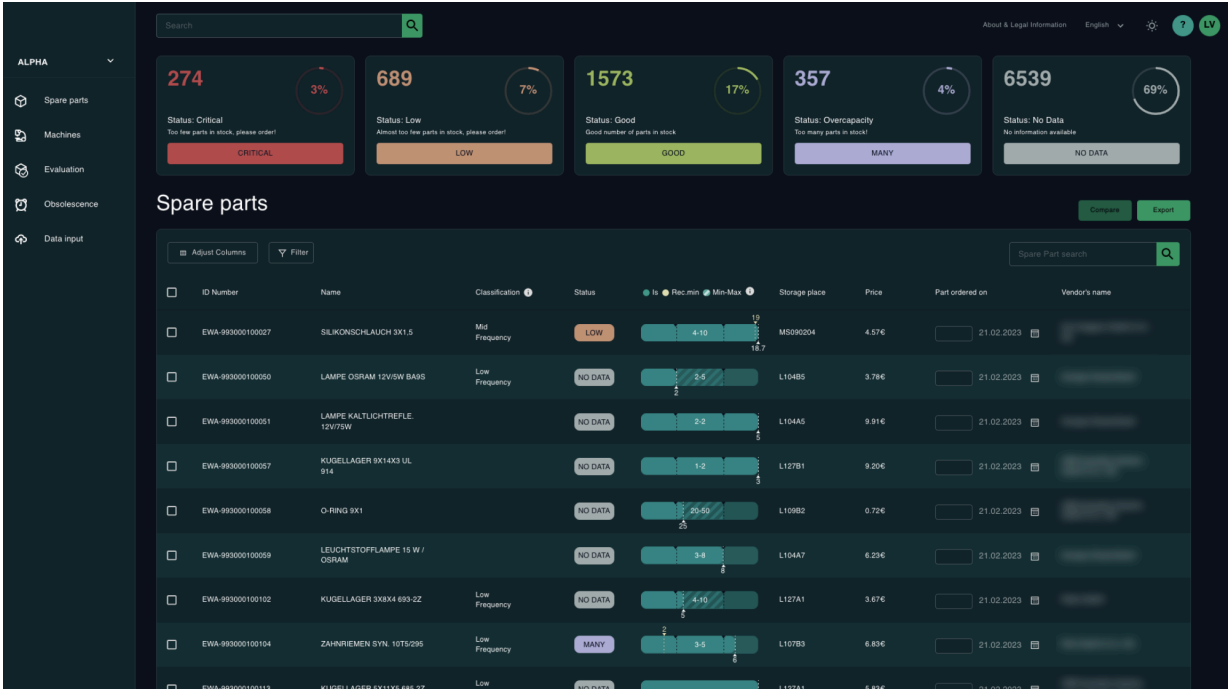
Motius GmbH  
December 18, 2025 13:54 (84b3361)



# Predictive Spare Parts Service

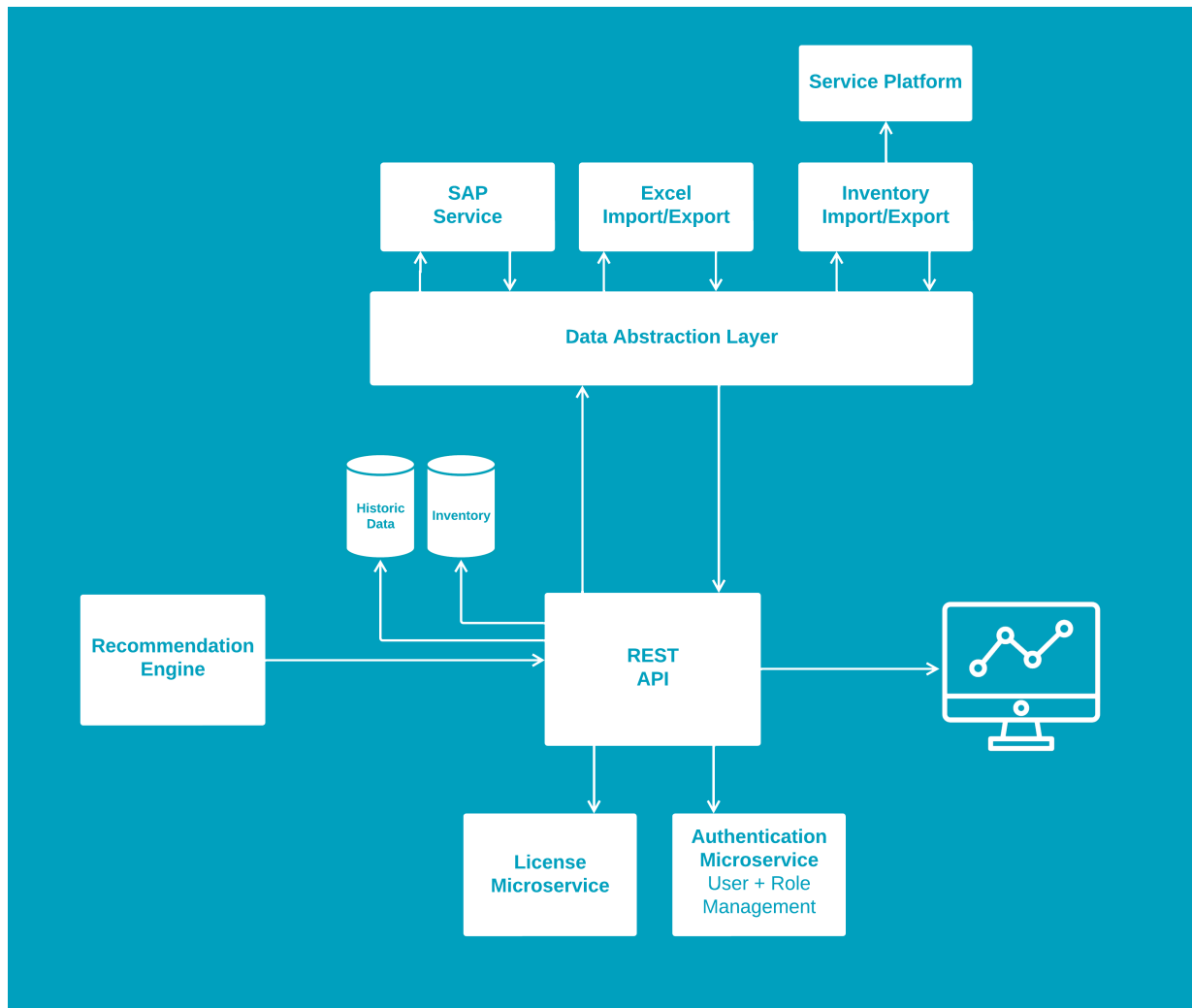


The goal of PSPS (Predictive Spare Parts Service) is to innovate the whole spare part management for (automation) plants.



For that, we provide a service that integrates with existing data lakes (e.g. SAP HANA) to forecast the demand of spare parts, but to also provide transparency into the spare part management, by combining this with a digital inventory, CMDB and Life Cycle Information.

## Architecture



- A data abstraction layer models the communication of the in- and outgoing data, and provide a generic interface to the REST API
- As part of the MVP V1.0 the first interface to SAP, as well as Excel and inventory im-/exports were be implemented
- The layer can be extended to further integrations (e.g. Oracle ERP) and also allows the integration of custom services (e.g. custom ERP of customer)
- The integration services are separated and can either sit in the same environment, or outside the network (e.g. to connect to a customers local SAP)